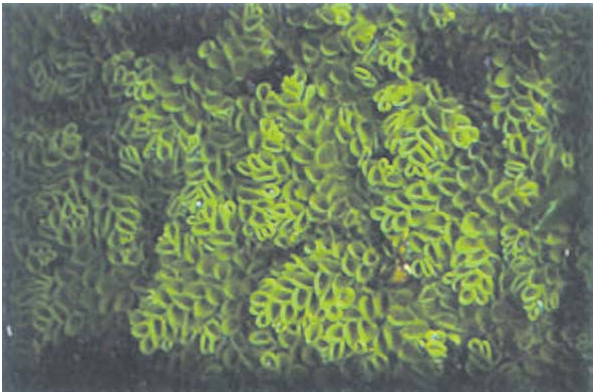


MARSILEALES



*Marsilea crenata* C. Presl

SALVINIALES

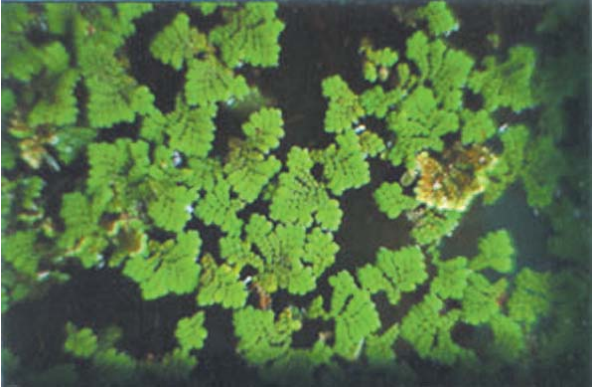


*Azolla pinnata* R. Br.



*Salvinia cucullata* Roxb. ex Bory

SALVINALES



*Salvinia natans* (L.) All.

PTERIDALES



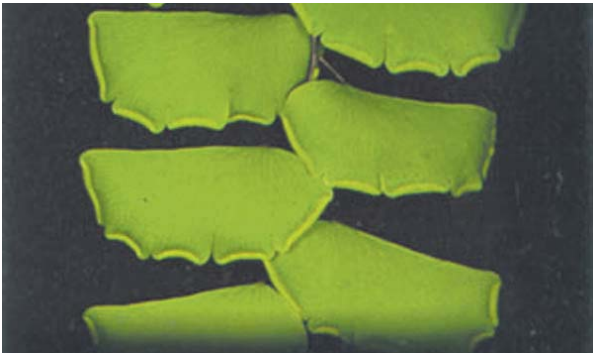
*Adiantum edgeworthii* Hook.



*Adiantum edgeworthii* Hook.



*Adiantum philippense* L.



*Adiantum philippense* L.



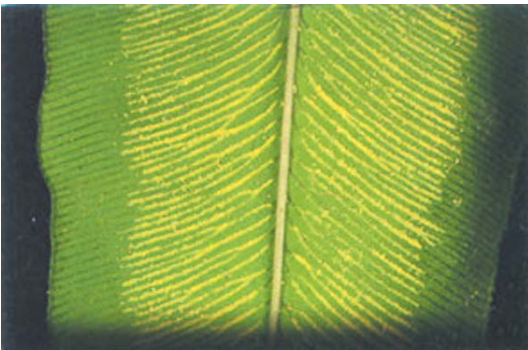
*Cheilanthes tenuifolia* (Burm. f.) Sw.



*Cheilanthes tenuifolia* (Burm. f.) Sw.



*Coniogramme fraxinea* (D. Don) Fé e ex Diels  
var. *serrurata* (Blume) Hieron.



*Coniogramme fraxinea* (D. Don) Fé e ex Diels  
var. *serrurata* (Blume) Hieron.



*Doryopteris ludens* (Wall. ex Hook.) J. Sm.



*Hemionitis arifolia* (Burm. f.) T. Moore



*Notholaena velutina* Tardieu & C. Chr.



*Onychium siliculosum* (Desv.) C. Chr.



*Onychium siliculosum* (Desv.) C. Chr.



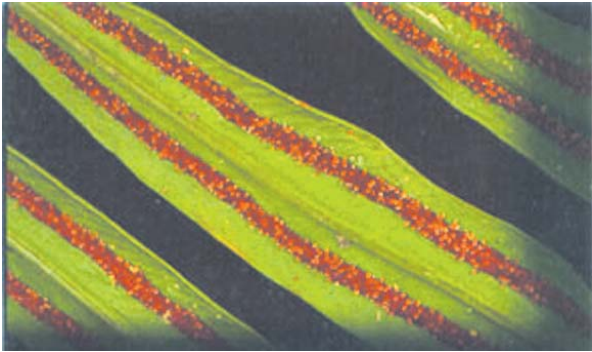
*Pityrogramma calomelanos* (L.) Link.



*Pityrogramma calomelanos* (L.) Link.



*Taenitis blechnoides* (Willd.) Sw.



*Taenitis blechnoides* (Willd.) Sw.



*Ceratopteris thalictroides* (L.) Brongn.



*Acrostichum aureum* L.



*Pteris asperula* J. Sm.

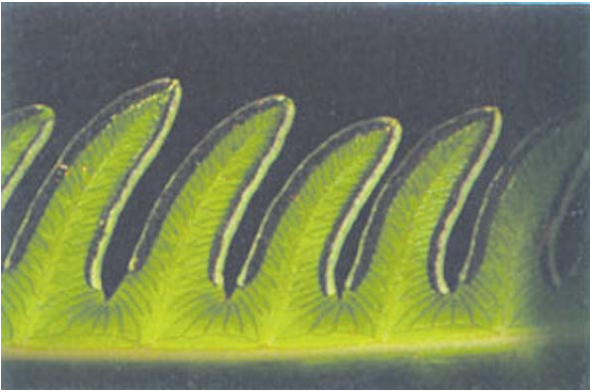


*Pteris asperula* J. Sm.

PTERIDALES



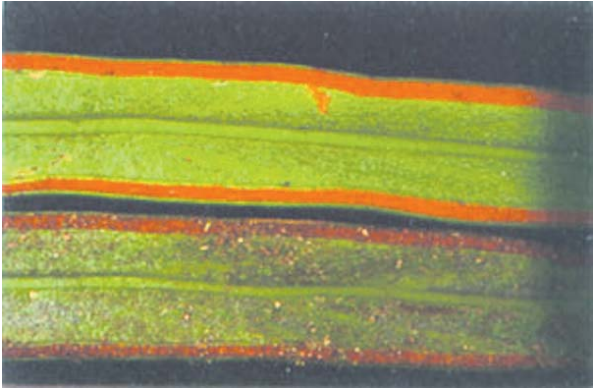
*Pteris biaurita* L.



*Pteris biaurita* L.



*Vittaria angustifolia* Blume



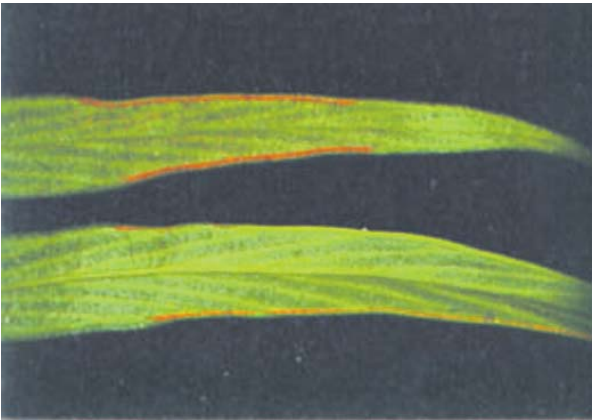
*Vittaria angustifolia* Blume



*Vittaria flexuosa* Fée



*Vittaria sikkimensis* Kuhn

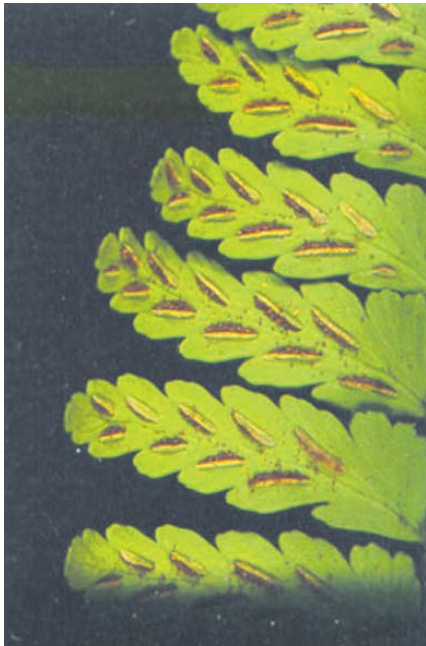


*Vittaria sikkimensis* Kuhn

BLECHNALES



*Asplenium crinicaule* Hance



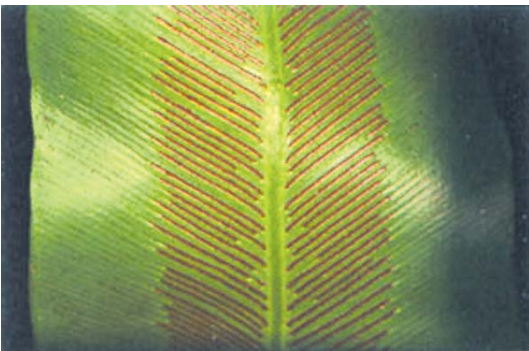
*Asplenium crinicaule* Hance



*Asplenium ensiforme* Wall. ex Hook. & Grev.



*Asplenium ensiforme* Wall. ex Hook. & Grev.



*Asplenium nidus* L. var. *nidus*



*Asplenium nidus* L. var. *nidus*



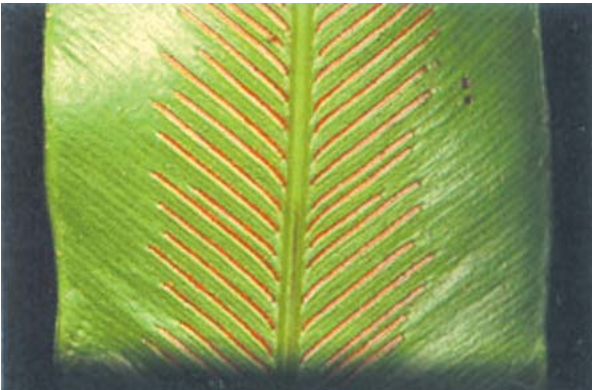
*Asplenium normale* D. Don



*Asplenium normale* D. Don



*Asplenium phyllitidis* D. Don subsp. *phyllitidis*



*Asplenium phyllitidis* D. Don subsp. *phyllitidis*