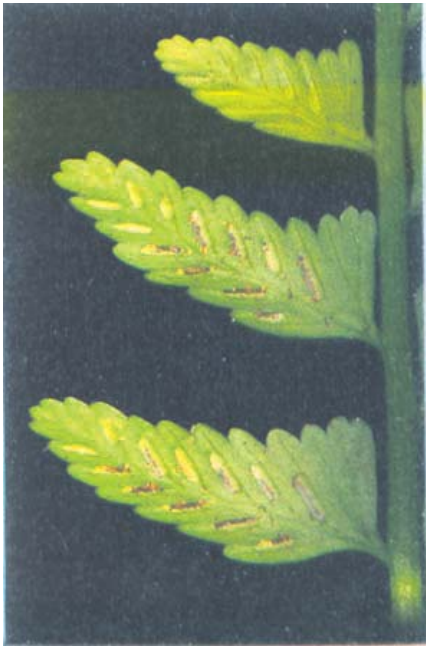


BLECHNALES



*Asplenium tenerum* G. Forst.



*Asplenium tenerum* G. Forst.

BLECHNALES



*Blechnum indicum* Burm. f.



*Blechnum orientale* L.



*Brainea insignis* (Hook.) J. Sm.

BLECHNALES



*Brainea insignis* (Hook.) J. Sm.



*Stenochlaena palustris* (Burm. f.) Bedd.



*Stenochlaena palustris* (Burm. f.) Bedd.

BLECHNALES



*Woodwardia harlandii* Hook.



*Woodwardia harlandii* Hook.



*Woodwardia japonica* (L. f.) Sm.



*Woodwardia japonica* (L. f.) Sm.



*Bolbitis appendiculata* (Willd.) K. Iwats.  
subsp. *appendiculata*



*Bolbitis appendiculata* (Willd.) K. Iwats.  
subsp. *appendiculata*

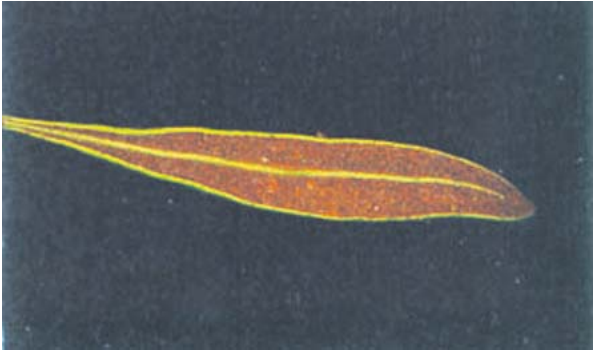


*Bolbitis heteroclita* (C. Presl) Ching



*Elaphoglossum dumrongii* Tagawa & K. Iwats.

BLECHNALES



*Elaphoglossum dumrongii* Tagawa & K. Iwats.



*Elaphoglossum malayense* Holttum



*Anisocampium cumingianum* C. Presl

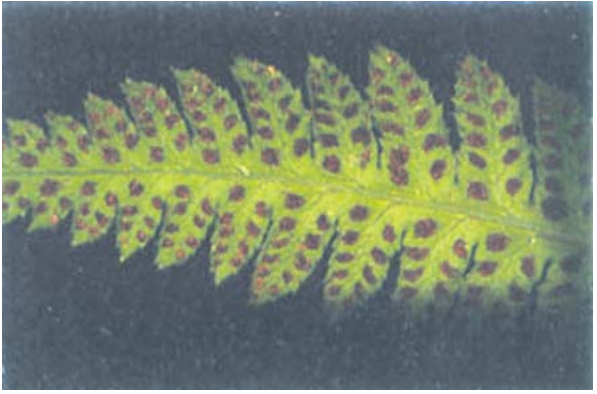


*Anisocampium cumingianum* C. Presl



*Athyrium dissitifolium* (Baker) C. Chr.

BLECHNALES



*Athyrium dissitifolium* (Baker) C. Chr.

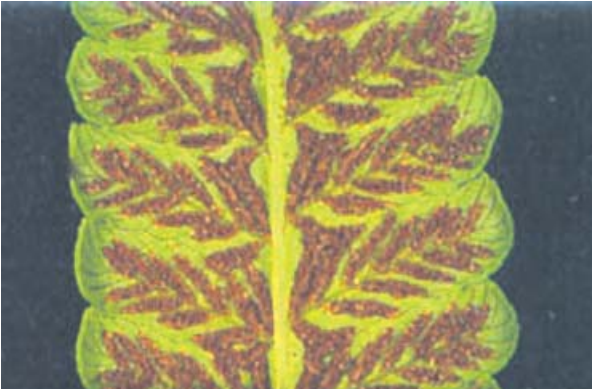


*Diplazium cordifolium* Blume



*Diplazium esculentum* (Retz.) Sw.

BLECHNALES



*Diplazium esculentum* (Retz.) Sw.



*Diplazium malaccense* C. Presl



*Diplazium malaccense* C. Presl



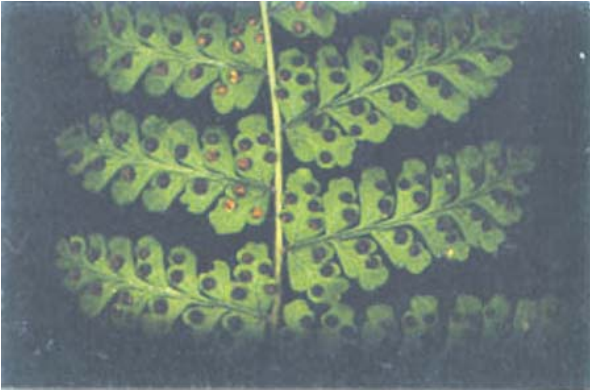
*Diplazium tomentosum* Blume



*Diplazium tomentosum* Blume



*Acrophorus stipellatus* T. Moore



*Acrophorus stipellatus* T. Moore



*Cyclopetis crenata* (Fé e) C. Chr.



*Cyclopetis crenata* (Fé e) C. Chr.



*Didymochlaena truncatula* (Sw.) J. Sm.



*Didymochlaena truncatula* (Sw.) J. Sm.



*Dryopteris cochleata* (D. Don) C. Chr.



*Dryopteris cochleata* (D. Don) C. Chr.



*Dryopteris neoassamensis* Ching



*Dryopteris neoassamensis* Ching



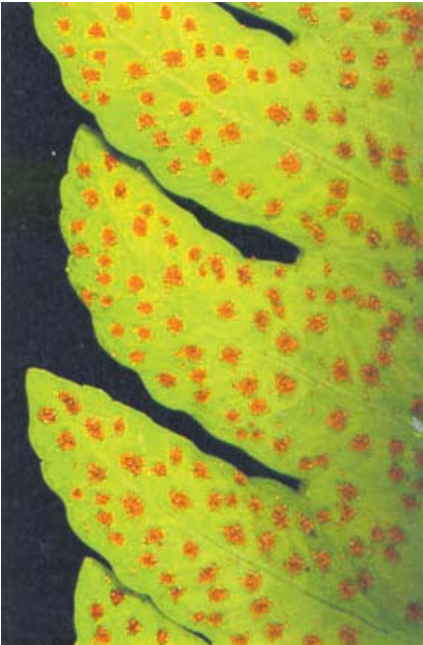
*Dryopteris sparsa* (D. Don) Kuntze



*Dryopteris sparsa* (D. Don) Kuntze



*Pleocnemia irregularis* (C. Presl) Holttum



*Pleocnemia irregularis* (C. Presl) Holttum



*Polystichum biaristatum* (Blume) T. Moore



*Polystichum biaristatum* (Blume) T. Moore



*Pteridrys australis* Ching



*Pteridrys australis* Ching



*Tectaria impressa* (Fé e) Holttum



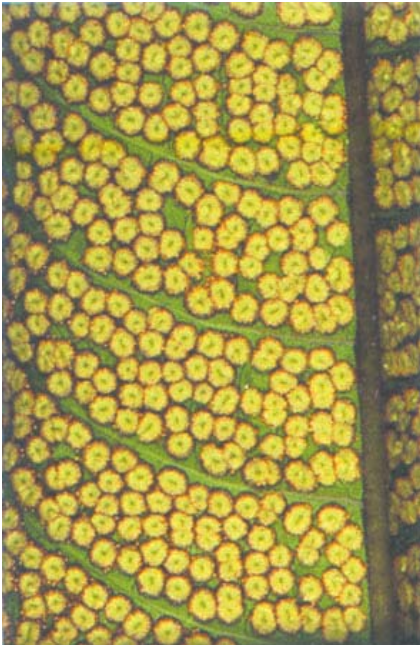
*Tectaria impressa* (Fé e) Holttum



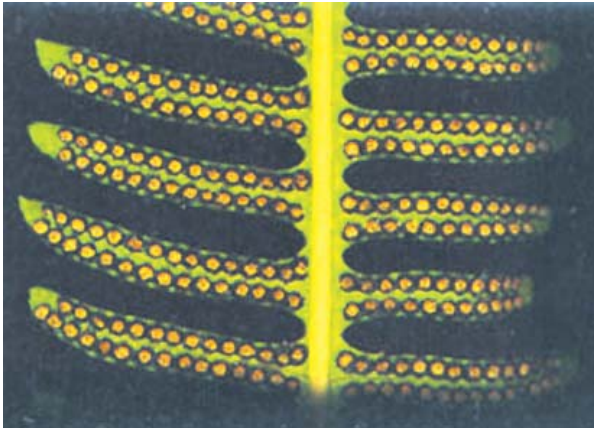
*Tectaria variolosa* (Wall. ex Hook.) C. Chr.



*Tectaria vasta* (Blume) Copel.



*Tectaria vasta* (Blume) Copel.



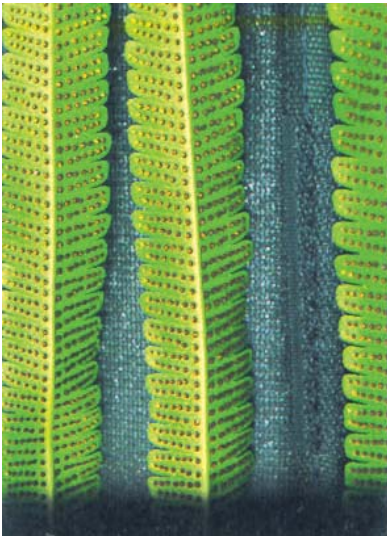
*Amphineuron immersum* (Blume) Holttum



*Amphineuron immersum* (Blume) Holttum



*Pneumatopteris truncata* (Poir.) Holttum



*Pneumatopteris truncata* (Poir.) Holttum



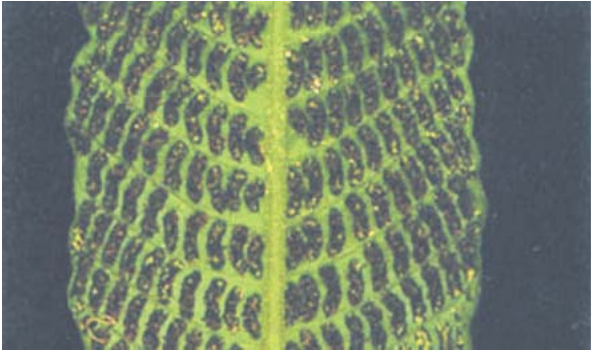
*Pronephrium nudatum* (Roxb.) Holttum



*Pronephrium nudatum* (Roxb.) Holttum



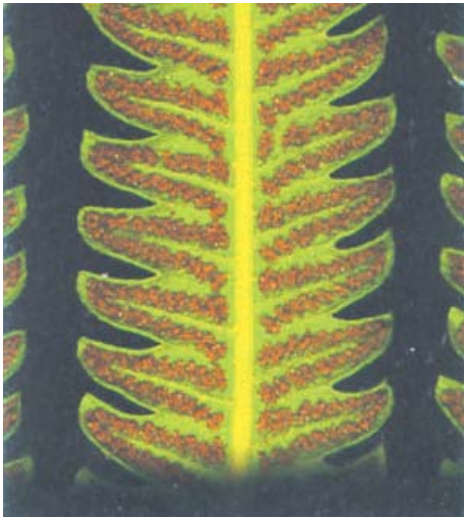
*Pronephrium triphyllum* (Sw.) Holttum var. *triphyllum*



*Pronephrium triphyllum* (Sw.) Holttum var. *triphyllum*



*Sphaerostephanos polycarpus* (Blume) Copel.



*Sphaerostephanos polycarpus* (Blume) Copel.



*Araiostegia pulchra* (D. Don) Copel.



*Araiostegia pulchra* (D. Don) Copel.



*Davallia solida* (G. Forst.) Sw.



*Davallia solida* (G. Forst.) Sw.



*Davallia trichomanoides* Blume var. *trichomanoides*



*Humata heterophylla* (Smith) Desv.



*Humata heterophylla* (Smith) Desv.



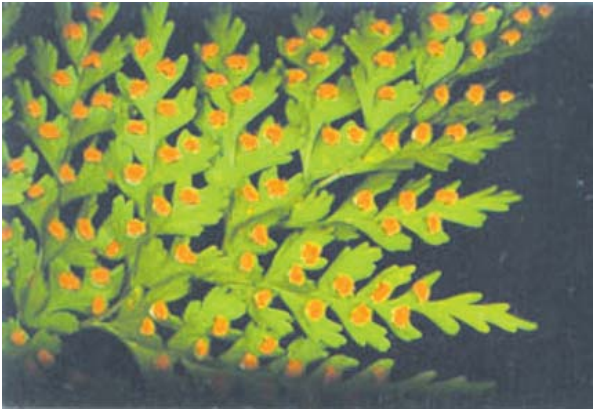
*Humata repens* (L. f.) J. Small ex Diels



*Humata repens* (L. f.) J. Small ex Diels



*Leucostegia immersa* C. Presl



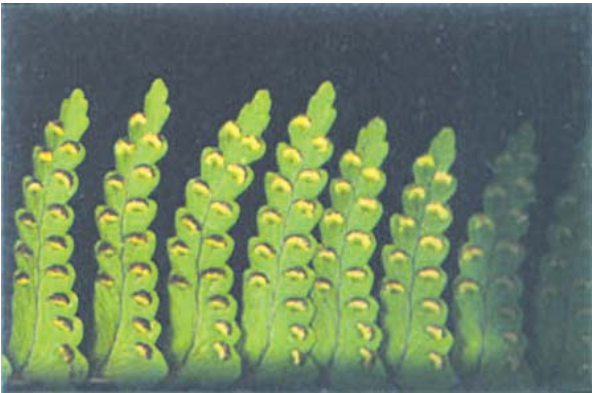
*Leucostegia immersa* C. Presl



*Nephrolepis cordifolia* (L.) C. Presl



*Nephrolepis delicatula* (Decne.) Pic.-Serm.



*Nephrolepis delicatula* (Decne.) Pic.-Serm.



*Nephrolepis falcata* (Cav.) C. Chr.

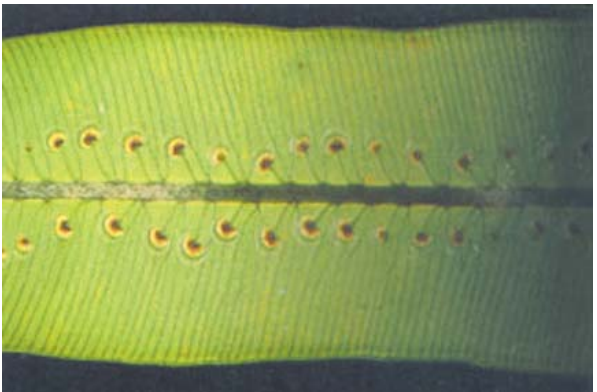
DAVALLIALES



*Nephrolepis falcata* (Cav.) C. Chr.



*Oleandra musifolia* (Blume) C. Presl



*Oleandra musifolia* (Blume) C. Presl



*Oleandra wallichii* (Hook.) C. Presl



*Oleandra wallichii* (Hook.) C. Presl